



*Thank you for helping the homeless  
animals in our community!!*

The ornaments on the following pages have pictures of animals that have come through our shelter and on the back is an item that is most needed at this time. You just need to print them back to back, cut them out, and you're ready to go.

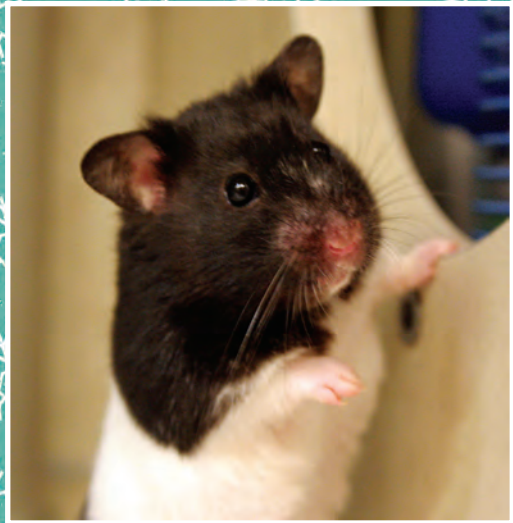
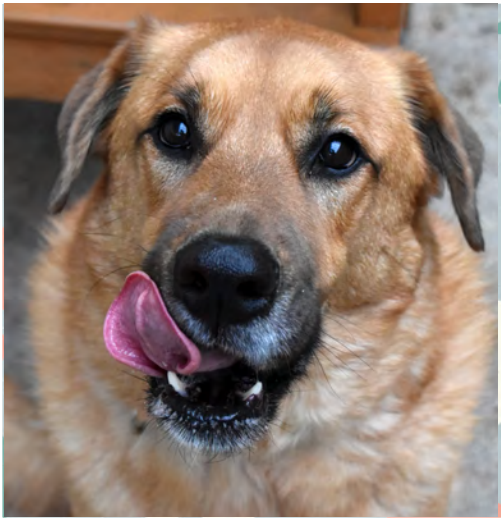
Donations can be dropped off at the shelter whenever we are open: *Tuesday-Friday 9:30-5:30 and Saturday 9:30-4:00*. We are located at *3120 Martin Way E, Olympia, WA 98506*. We can also make arrangements to have an employee or volunteer come pick up donations.

If you have any questions, please don't hesitate to be in touch. I can be reached at:

[volunteer@jointanimalservices.org](mailto:volunteer@jointanimalservices.org) or  
360-352-2510, ext. 1009.

Thank you again,  
Chandra Mincher  
Education and Volunteer Coordinator  
Animal Services





*Thank you for your donation of:*

**Dog Treats  
that are small**



*Thank you for your donation of:*

**Dog Treats  
that are small**



*Thank you for your donation of:*

**Kitten Food**

Kirkland no grain cat, Merrick kitten or limited ingredient diet, Whole Earth Farms kitten, Blue Buffalo kitten, Wellness (or Core) kitten, Royal Canin Mother & Babycat, Natural Balance all life stages, Canidae kitten or all life stages, NutriSource all life stages, PureVita all life stage, Iams kitten



*Thank you for your donation of:*

**Adult Cat Food**

(meat as the first 2 ingredients)



*Thank you for your donation of:*

**Critter Bedding**

(Carefresh Natural Bedding or similar,  
no wood shavings)



*Thank you for your donation of:*

**Small Animal Treats**

**Any Variety**





*Thank you for your donation of:*

**A Gift Certificate  
to a Pet Supply Store**

We never know what animal is coming through our doors, so gift certificates let us purchase unique supplies when they are most needed.



*Thank you for your donation of:*

**A Gift Certificate  
to a Pet Supply Store**

We never know what animal is coming through our doors, so gift certificates let us purchase unique supplies when they are most needed.



*Thank you for your donation of:*

**Cat Toys or Treats**



*Thank you for your donation of:*

**A Gift Certificate  
to a Pet Supply Store**

We never know what animal is coming through our doors, so gift certificates let us purchase unique supplies when they are most needed.



*Thank you for your donation of:*

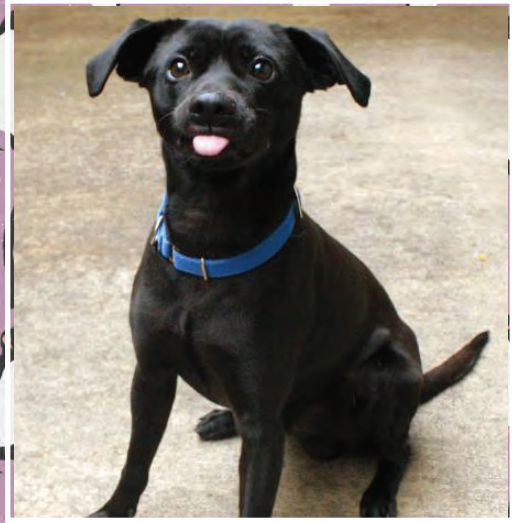
**Rabbit Chew Toy**



*Thank you for your donation of:*

**Rabbit, Guinea Pig, Hamster/  
Gerbil or Rat Pellets**





*Thank you for your donation of:*

**Dog Treats  
that are small**



*Thank you for your donation of:*

**Dog Treats  
that are small**



*Thank you for your donation of:*

**Kitten Food**

Kirkland no grain cat, Merrick kitten or limited ingredient diet, Whole Earth Farms kitten, Blue Buffalo kitten, Wellness (or Core) kitten, Royal Canin Mother & Babycat, Natural Balance all life stages, Canidae kitten or all life stages, NutriSource all life stages, PureVita all life stage, Iams kitten



*Thank you for your donation of:*

**Adult Cat Food**  
(meat as the first 2 ingredients)



*Thank you for your donation of:*

**Small Animal Treats  
Any Variety**



*Thank you for your donation of:*

**Critter Bedding**  
(Carefresh Natural Bedding or similar,  
no wood shavings)

